

## What Is Required To Operate The 2128L UHF RFID Reader:

The 2128L UHF RFID Reader requires the [2128-CRD-02-KIT](#) in order to charge the reader. The included Support Bar must be fitted to prevent the unit from toppling over when docked.



## Reader Box Contents:



2128L UHF RFID Reader

### Order:

- [2128L-EX1](#) (ETSI, No Imager)
- [2128L-AX1](#) (FCC, No Imager)

## Cradle Box Contents:



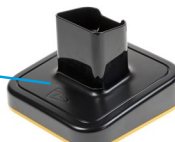
World Traveller Power Supply



Mini USB Cable



Support Bar



Docking Cradle

### Order:

- [2128-CRD-02-KIT](#)